

Paper Discovery Center

All Things Paper

VOLUME 1, ISSUE 7

OCTOBER 2005

Don't miss the
last ArtWalk of
the year—
Sat., Oct. 29th!

**

Admission to
the Paper
Discovery
Center will be
free as part of
donation day
and artist
Barbara
O'Connell will
demonstrate
papier-mâché.

INSIDE THIS ISSUE:

Volunteer Spotlight	2
Collections & Library Donations	2
Family & Friends Program	2
Kotex Restroom	3
Outdoor Learning Center	3
Wish List	4
Halloween Happenings	4



Extreme Makeover—Museum Edition

Thanks to a Local Papermaker, the Paper Discovery Center Gets a New Look

The Paper Discovery Center was very fortunate to have the time and talents of 150 area employees from Kimberly-Clark's Adult/Fem Care department for a two-day makeover of the facility, October 19th and 20th.

The Paper Discovery Center was chosen as the site for the company's teambuilding initiatives. While workers dove into projects unlike their own back at work and shared duties with fellow workers, the employees

gained a unique teambuilding opportunity. In the process, the Paper Discovery Center gained:

Phase #1 construction of its Outdoor Learning Center, complete with 14 tree species and a miniature plantation forest (*more details on page 3*)

Benches and teaching station posts in the Outdoor Learning Center

A mural of the first paper mills along the lower Fox River, painted on an outdoor retaining wall

A Kotex-themed restroom (*more details on page 3*)

Twelve moveable walls and pedestals for the Frank C. Shattuck Exhibit Hall

A memory book for past and present employees of the paper industry to record their thoughts

A curtain wall divider for office space in the river level

Thank you Kimberly-Clark for a job well done!

Get Ready for Krimpart® !

The Paper Discovery Center welcomes Sally Berben as the artist in November's Paper Arts Series. Sally Berben has spent her entire career (first at the Institute of Paper Chemistry and now Integrated Paper Services), as well as her hobbies, focused on paper. Shying away from the title of "artist," Sally loves crafting. Sally states, "I have many fond memories of paper crafting with both Mom and Dad and hope that these Krimpart® projects will be fun for you."

Developed by James Higa, Krimpart® is easy to learn. After mastering a simple three-step process, both children and adults will be creating unique paper art sculptures in seconds. A page of newsprint is rolled into a tube, pressed into accordion-like pleats, and then shaped into the basic form - a DONUT. Sounds tasty, doesn't it? Sally will help you recycle newspapers and magazines into unique art objects at the Paper Discovery Center on Saturday, November 19th from 10:00—4:00. We hope to see you there!

Volunteer Spotlight—Dan Waselchuk

Meet Thomas Grade: Creator of our Paper Sculpture *Paper Journey*

Artists Lynn Ann Sauby and Thomas Grade will collaborate with juniors and seniors from Menasha High School to create a sculptural work in homage to the book. A working studio will be set up in the lower level of the Elisha D. Smith Public Library October 20-November 24, 2005. If you would like to get your hands wet and make your own paper, call De Dalum at the library (967-5166 ext. 720). The sessions are free and extend from October 31 through November 24.

Dan Waselchuk has been involved with the Paper Discovery Center since it was little more than a dream. He joined the Paper Industry International Hall of Fame board in 1992, “recruited” by Chairman George Mueller. George and Dan had spent many years together at Wisconsin Tissue.

Dan’s career in the paper industry began in the 1950s, after graduating from UW-Madison with a BS in Mechanical Engineering. He spent 27 years with Fort Howard (now Georgia-Pacific) and 15 years with Wisconsin Tissue (now SCA). Following his long tenures with the corporations, Dan served as a consultant for four years in Europe and South America.

Dan’s volunteer roles are many and varied for the facility. His



Dan Waselchuk, at right, escorts Governor Jim Doyle through the Paper Discovery Center at the museum’s grand opening on March 28, 2005.

experience as Director of the Harmony Heritage Museum in Kenosha for the past 23 years has proved helpful in his role as volunteer Director of the Paper Discovery Center. Dan was involved with the conceptual design of the facility, guiding it through to completion of its Phase #1 elements. He enjoys

managing construction and operations for the facilities.

Dan also serves on the organization’s Board of Directors as Chief Operating Officer. Despite all of that involvement, he also finds time to work with families and school groups, most recently by demonstrating the manual paper strength testing equipment he built for field trip use.

Dan has been married for more than 55 years. He and his wife Pat have 9 children, 26 grandchildren, and 2 great-grandchildren. Outside of the Paper Discovery Center, Dan enjoys golf, hunting, travel, and his involvement with the Barbershop Harmony Society.

Collections & Library Donations

The archive of the Paper Discovery Center is growing in size—thanks to your generous donations! The following is a list of donations received in September 2005. If you have a donation for consideration, please call Carrie Feld, Curator/Archivist at 920-380-7491.

Bernice Grogan—Book

Dick Hinz—Kaycel surgical pants

CELEBRATING ALL THINGS PAPER —

Join our
Family & Friends
Program



Welcome Family & Friends

We welcome the following new additions to our Family & Friends program during the month of September:

Individual

Donald L. Stone

Family

Pattee & Tom LaFountain

Friend

Alan F. & Christina M. Button

Family & Friends enjoy many benefits through their support of the Paper Discovery Center. If you are interested in joining the Family & Friends Program, contact the Center for more information.

Themed-Restrooms?!

The John Michael Kohler Art Center in Sheboygan, Wisconsin, has them. The Shoji Tabuchi Theatre in Branson, Missouri, has them. And now so does the Paper Discovery Center.

Be sure to stop at the Paper Discovery Center to check out the new “**Kotex restroom.**” Decorated with historical Kotex ads from the past 70+ years, the bathroom explores the history of a popular paper product that was born right here in the Paper Valley.

To find out how you can get your name on a restroom at the Paper Discovery Center, contact Val Wylie at 920-380-7491.

Bathroom Temporarily OUT OF ORDER

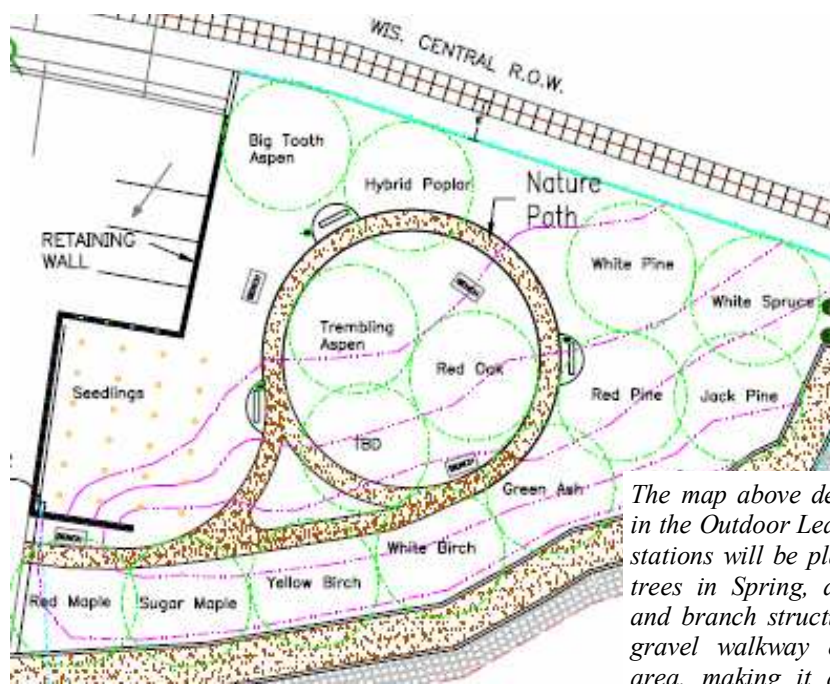


A Closer Look at the Outdoor Learning Center

The Outdoor Learning Center (OLC) has been in the works for several years, but it was this summer that the first signs of real progress began taking shape. A retaining wall was built, the land was graded and seeded, and a pump was installed for irrigation.

Over the two-day period in October, Kimberly-Clark employees worked along side 6th, 7th, & 8th grade students from the School on the Lake Charter School at Menasha's Maplewood Middle School to put in the final touches of Phase #1 development

were the following trees: White Birch, Sugar (Hard) Maple, Red Maple, Green Ash, White Pine, Trembling Aspen, Red Oak, Jack Pine, Red Pine, White Pine, Yellow Birch, Triploid Aspen, Hybrid Poplar, and Elm. Also planted was a plot of Red Pine seedlings. This will give us the opportunity to replicate sustainable forestry practices such as selective thinning and explore the issue of competitive growth.

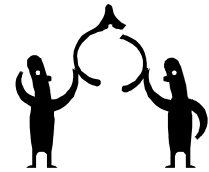


The map above details the layout of trees in the Outdoor Learning Center. Teaching stations will be placed next to each of the trees in Spring, detailing the bark, leaf, and branch structure of each. A crushed gravel walkway extends throughout the area, making it accessible to all. The Outdoor Learning Center is at the east end of the Paper Discovery Center parking lot.

The OLC was designed to engage visitors in discussion about tree species used for pulpwood, sustainable forestry principles being adopted by the paper industry, and new topics such as hybrid remediation. Planted

Governor Jim Doyle has provided \$100,000 in the state budget to support further development of the OLC, to include curriculum, hands-on learning stations, and exhibits.

Wish List



The Paper Discovery Center has a growing “wish list” and gratefully accepts donations of supplies and equipment. In addition to helping reduce necessary purchase costs, donations can also provide you with a productive and adaptive reuse of your unwanted materials. If you have an item to donate, you may request a tax donation letter to assist you in your record keeping. We appreciate your support!

Thank you to the following people for making our “wishes” come true:

Aluminum Foil—Novelis Foil Products

The following items would allow us to better serve you, our guests:

Education

- various consumable supplies such as glue sticks, paper, posterboard, pencils, etc.
- aluminum foil
- paper cutter

Paper Lab

- Sunday comics
- microscopes

- electric hot plate
- clock
- UV lamp
- old books (pre-1860) that we can tear apart for experiments
- test tube racks

Collections

- humidity monitors for collections storage areas
- visible light meter
- archival boxes
- acid free tissue

Operations

- U.S. flag stand
- call bell for front desk

- cash register
- wheelchair
- dolly
- computer supplies such as paper and EPSON ink Cartridges (T0410 20 black & colored)
- blank laser address labels (Ink Jet 8660 and Ink Jet 8662)
- folding chairs
- lightweight conference tables
- digital camera
- scanner
- equipment and tools for our exhibit workshop
- level
- laptop computer
- and, of course, cash!

Halloween Fun!

Make a papier-mâché mask

Sign up now to reserve a space in the mask-making workshop (three classes in length):

Wednesday, October 26th - 1:00—4:00

Thursday, October 27th - 1:00—4:00

Friday, October 28th - 1:00—4:00

Cost - \$15.00

Age - 9 and up

The next Papier-mâché Bowl workshop is scheduled for Fri., Nov. 4th; Thurs., Nov. 10th; and Fri., Nov. 11th. Cost is \$15. You must attend all three days. Call 920-380-7491 to register.



Paper Discovery Center

HOME OF THE PAPER INDUSTRY INTERNATIONAL HALL OF FAME

425 West Water Street
Appleton, WI 54911

Phone: 920-380-7491

Fax: 920-731-2704

www.paperdiscoverycenter.org

Celebrating All Things Paper