

## Paper Discovery Center

Take  
advantage of  
free  
admission to  
the 1st  
anniversary  
celebration as  
a member of  
our Family &  
Friends  
program.

### INSIDE THIS ISSUE:

Cardboard Furniture	2
Collections & Library Donations	2
Preservation Award	3
Calendar of Events	3
Wish List	4
Paper Clips	4



# All Things Paper

VOLUME 2, ISSUE 3

MARCH 2006

## The Paper Discovery Center Turned ONE and is Ready to Celebrate with You!

Mark your calendars: The Paper Discovery Center, Northeast Wisconsin's only science and technology museum, is celebrating its One-Year Anniversary! The celebration will kick off on Tuesday, April 18<sup>th</sup>, and will run until Sunday, April 23<sup>rd</sup>. This is where you will have your chance to win a year's supply of paper products! Each day there will be a drawing from those who visited the museum.

Join the Paper Discovery Center in celebration by participating in the activities being offered.

### Tuesday, April 18 -- Spring Creations

Make paper flowers, kites, boats, and creative airplanes in honor of spring!



### Wednesday, April 19 -- Around the House

Explore and help create a GIANT paper product house. Make masks with every-day paper products found around the house.

### Thursday, April 20 -- Pens, Punches, & Paperclips

Discover the science of chromatography, make paper punch art: perfect for scrapbooks and cards, and make a helicopter with paperclips.

### Friday, April 21 -- Educational Paper

Listen to children's story reading, and take part in calligraphy sessions (presenters to be announced). Make your own book, and write invisible messages to decode!

### Saturday, April 22 -- Earth Day

Recycled crafts and paper, learn what happens to recycled paper, and start your own recycling program at school.

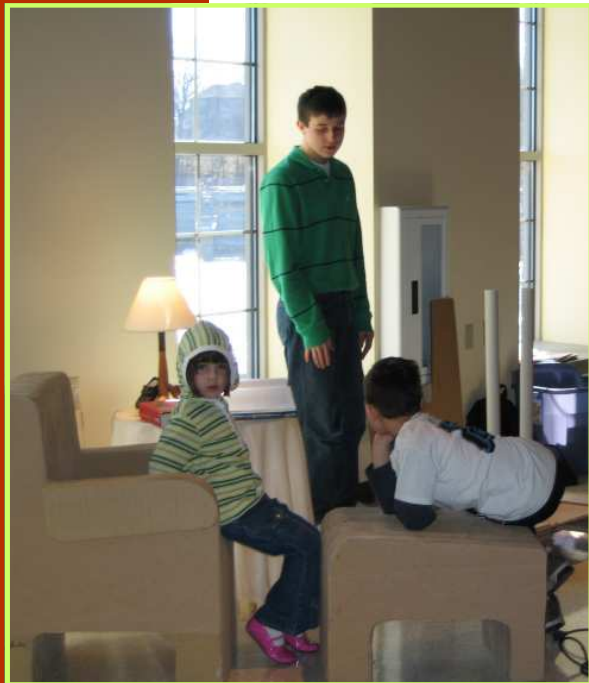
### Sunday, April 23 -- Paper Party

Make your own piñata. Break piñatas at the Party! Play games, win candy prizes, and eat cake.

During the weeklong event, you will also have the opportunity to tour the museum and even make your own paper to take home. All activities are included in the cost of admission to the museum.

## The Work of Andy Becker (a.k.a. “The Cardboard Furniture Guy”)

*Paper Arts Series Featured Artist—  
Saturday, March 18th*



## Collections & Library Donations

The archive of the Paper Discovery Center is growing in size—thanks to your generous donations! The following is a list of donations received in February 2006. If you have a donation for consideration, please call Carrie Feld, Curator/Archivist at 920-380-7491.

**Louis L. Martin** — *The Institute of Paper Chemistry - The Dard Hunter Paper Museum - Appleton, Wisconsin* publication

**Menasha Historical Society** — 1932 Kleenex ad

**George P. Mueller** — history of Wisconsin Tissue Mills, Inc. and five issues of *The Paper Maker*

**Omya, Inc.** — *Calcium Carbonate in the Paper Industry* publication

**Gary C. Otto** — historical Atlas Mill photographs

## Calendar of Events

### Paper Science Saturday - Origami: Saturday, April 8, 2006

*"Origami Quilts and Tessellations"* Local origami folder Candice Bradley Byrne returns to the Paper Discovery Center from 10:00 till 4:00 to help you explore the world of tessellations and reproduce them with paper. Fold small units and fit them together into quilts. This experience is appropriate for anyone from 4th grade through adult.

### Paper Arts Series - Spring Flowers: Saturday, April 15, 2006

Join the Paper Discovery Center for a day of flower making, just in time for spring. Choose from a variety of styles, including Krimpart® flowers and even flowers made of paper toweling!

### 1st Anniversary Celebration - Tuesday, April 18—Sunday, April 23

We are celebrating our 1st anniversary with a week of special activities. See page 1 for more details.

### Paper Science Saturday - Scientific Investigations: Saturday, May 13, 2006

Help the Paper Discovery Center solve a mystery. Your mission is to become a scientific investigator: make observations, take notes, learn chemical tests, test spots and deposits, look at watermarks, and determine if the documents, rare books, and pieces of art are indeed real or forgeries!! Stop by the Paper Discovery Center from 10:00 till 4:00 on Saturday, May 13th to help us solve the mysteries.

*\*\*All activities are included in the cost of admission, unless noted otherwise.*

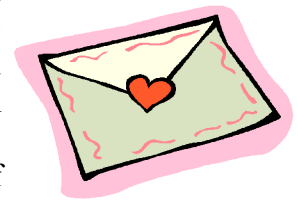
## 2006 Carolyn Kellogg Historic Preservation Award



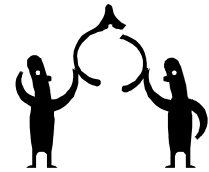
The Paper Discovery Center and Atlas Mill owner Randy Stadtmueller were honored by the Outagamie County Historical Society at its annual meeting on Monday, March 20, 2006, with the 2006 Carolyn Kellogg Historic Preservation Award. The Award is presented to a person or entity that has demonstrated exemplary effort to maintain, restore, or reuse a historic structure or object which represents some aspect of the history of Outagamie County. The Paper Discovery Center joins past winners: Lawrence University for its preservation of the Lawrence Memorial Chapel (2002), Appleton Historic City Park Neighborhood (2003), and Robert and Nancy Wise for the care and restoration of the Zonne Home (2004).

## Wanted: Old Greeting Cards

We are gearing up for a week full of activities in celebration of our first anniversary (see page 1) and are in need of your old greeting cards for Earth Day projects on Saturday, April 22. Please drop off your old cards at the Paper Discovery Center no later than Thursday, April 20th. Thank you!



# Wish List



The Paper Discovery Center has a growing “wish list” and gratefully accepts donations of supplies and equipment. In addition to helping reduce necessary purchase costs, donations can also provide you with a productive and adaptive reuse of your unwanted materials. If you have an item to donate, you may request a tax donation letter to assist you in your record keeping. We appreciate your support!

*Thank you to the following people for making our “wishes” come true:*

Alan Babcock—magnetized stirring hot plate

Don Guay—weights for paper testing

The following items would allow us to better serve you, our guests:

## Education

- various consumable supplies such as glue sticks, paper, posterboard, pencils, etc.
- aluminum foil
- paper cutter

## Paper Lab

- Sunday comics
- microscopes
- UV lamp
- old books (pre-1860) that we can tear apart for experiments
- test tube racks

## Collections

- humidity monitors for collections storage areas
- visible light meter
- archival boxes
- acid free tissue

## Operations

- U.S. flag stand

- cash register
- wheelchair
- computer supplies such as paper and EPSON ink Cartridges (T0410 20 black & colored)
- blank laser address labels (Ink Jet 8660 and Ink Jet 8662)
- folding chairs
- lightweight conference tables
- shredder
- scanner
- equipment and tools for our exhibit workshop
- TV/VCR/DVD combo unit
- and, of course, cash!



# Paper Clips

**How many consumer products will one cord of wood yield?**

- 1,000 pounds of toilet paper, or
- 30 Boston Rockers, or
- 12 dining room tables (each table seats eight), or
- 7,500,000 toothpicks, or
- 460,000 personal checks, or
- 89,870 sheets of letter head

bond paper (size 8 1/2" s 11"), or

- 61,370 standard #10 envelopes, or
- 14,384,000 commemorative-size postage stamps, or
- 1,200 copies of the National Geographic, or
- 2,700 copies of the average daily paper (35 pages), or
- 250 copies of the Sunday New York Times, or
- 942 one-pound books, or
- the heating value of one ton of coal, or
- the heating value of 200 gallons of fuel oil

*(Taken from www.paperfacts.com)*



425 West Water Street  
Appleton, WI 54911

Phone: 920-380-7491

Fax: 920-731-2704

[www.paperdiscoverycenter.org](http://www.paperdiscoverycenter.org)

**Celebrating All Things Paper**