

Paper Discovery Center

Join the PDC Volunteer Team

It's a great way
to give back to
the community
and its youth.
Hours and days
are flexible.

Please inquire
by calling Dave
at 920-380-
7491.

INSIDE THIS ISSUE:

Health & Hygiene Opens 2

GoodSearch - Raises Money for the PDC 2

Family & Friends 2

Into the Outdoors 3

Hall of Fame Spotlight 3

Wish List 4



All Things Paper

VOLUME 3, ISSUE 5

MAY 2007



Your Passport to Discovery...

The Paper Discovery Center is joining with area museums to celebrate science during the Victorian Era this summer. From Saturday, June 9th through Friday, August 31st, the Paper Discovery Center will host a new exhibit, *Paper in the Victorian Era*, featuring a variety of developments in paper from 1837 to 1901. A video and accompanying display on loan from the Alexander House in Port Edwards, Wisconsin, will detail photos of and product samples from the Columbian paper machine built for the 1893 World's Fair. The growth of the paper industry in the Fox Valley will be detailed through timelines and

accompanying maps. Visitors will even have a chance to solve a crime, straight out of the pages of Sherlock Holmes. Additional topics will also be included.

The Barlow Planetarium, Weis Earth Science Museum, and Hearthstone Historic House Museum are joining in the celebration of a Victorian Science Summer. Each venue is also offering special exhibits, shows, and activities. A brochure listing the full slate of summer events can be picked up at any of the four museums.

If you visit each of the four venues this summer and get your "Victorian Science Summer" brochure stamped at each museum, you will qualify to be entered into a prize drawing. At the end of the summer, one name will be drawn and the winner will receive a gift basket full of items, plus a bonus surprise. What a great incentive to explore the Fox Valley this summer!

Activities at the Paper Discovery Center

Saturday -- June 9th and July 21st – Make Victorian Era rag paper and meet Margaret Knight (inventor of the machine to make flat-bottomed paper bags) and/or A.J. Reid (editor of Appleton's Victorian Era newspaper *The Appleton Post*) during appearances from 11:00 a.m. till Noon and 1:30 pm till 2:30 p.m.

Thursday -- June 21st and July 19th (1:00 p.m.) and August 16th (5:00 p.m.)

Tour the Historic Atlas Mill, home to the Paper Discovery Center. Built in 1878 and restored in 2004, the Atlas Mill is a story of innovation and evolution. Tour the historic structure, learn the stories of its former workers, and appreciate the role the Atlas Mill played in the area's paper industry. Tour costs include admission to the Paper Discovery Center. Adults - \$7.00, Seniors - \$6.00, Students - \$5.00, and Families - \$15.00. Advanced registration is required.

Saturday -- June 23rd and August 4th - Make Victorian Era paper bags and meet Margaret Knight and/or A.J. Reid during appearances from 11 till Noon and 1:30 pm till 2:30 p.m.

Saturday -- July 7th and August 18th - Explore water, steam, and electric power of the 1800s and meet Margaret Knight and/or A.J. Reid during appearances from 11 till Noon and 1:30 pm till 2:30 p.m.



Browse the World Wide Web and Raise Money for the Paper Discovery Center

The Paper Discovery Center is now listed as a charity on the website www.goodsearch.com. GoodSearch acts as a search engine (just like Yahoo or Google.) The difference is that for every search you make, the Paper Discovery Center earns \$.01. Make sure to choose our corporate name "Paper Industry International Hall of Fame" as the charity of choice.

One cent can add up fast. For example, if 100 people make two searches a day, the Paper Discovery Center can earn \$730 over the course of the year. There's no limit on how much money we can earn in a year. Please help support the Paper Discovery Center in this new way!

Health & Hygiene Opens

The red paper towel "ribbon" was cut on the evening of Thursday, May 3rd to open our newest permanent exhibit, *Health & Hygiene*. Harry Spiegelberg, chairman of the Center's board, welcomed the group in attendance. In his remarks, Gordon Knapp, president of Kimberly-Clark's North Atlantic Family Care business, noted Kimberly-Clark's contributions to the Center since its 2005 opening and its sponsorship of the new exhibit. *Health & Hygiene* explores the many ways in which paper products help us control the spread of germs and diseases. A giant sneeze greets you at the start of the exhibit, enticing you to learn more about how you too can choose a cleaner lifestyle with paper. We hope you'll stop in soon to experience *Health & Hygiene*.



L-R: Herb Velazquez of KC's Innovation Design Center assists Harry Spiegelberg, chairman of the Paper Discovery Center's board, and Gordon Knapp, president of Kimberly-Clark's North Atlantic Family Care business, open the exhibit.

Thank you to the following organizations for help in making our exhibit opening possible: Michiels Fox Banquets Rivertyme Catering, City of Menasha, and Menasha Public Library.

Family & Friends Program

Apply Today's Admission
Toward An Annual
Membership



Welcome Family & Friends

We welcome the following new additions to our Family & Friends program:

Family

Tom & Pat Ullom*

Friend

Amy & Duane Buelow
Kent & Mara Demien
Virginia Rose
Leonard & Donna Weis*

*Indicates renewing member

Family & Friends enjoy many benefits through their support of the Paper Discovery Center. If you are interested in joining the Family & Friends Program, contact the Center for more information.



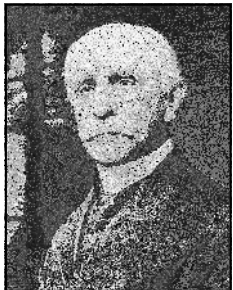
Producer Whitney Abbott and videographer Brian Alberth oversee the production of the segment. Hosts (L-R) Sydney, Jonathan, and Raphael press their paper to remove water.

Lights! Camera! Action!

Discover Mediaworks, Inc., known for the production of high-quality broadcast television programs such as *Discover Wisconsin* and *The Kitchens of Biró*, recently filmed a segment on papermaking at the Paper Discovery Center for an upcoming "Check it Out" feature for its youth environmental program *Into the Outdoors*. Discover Mediaworks is also assisting with the development of films covering a variety of careers within the paper industry for the upcoming exhibit *Lake States TAPPI's People in Papermaking* and for broadcast on the popular youth television series. Stay tuned for details on the program air dates and exhibit opening.

Hall of Fame Spotlight - John A. Kimberly

1995 Inductee for the Category of Founder



Mr. Kimberly was born in Troy, New York, in 1838 and moved with his family to Neenah, Wisconsin, when he was

nine years old. Before moving west, he had obtained the rudiments of an education in the schools of Troy, and his education was completed in the pioneer schools of Neenah and at Lawrence University in Appleton, Wisconsin.

Always ambitious to begin a business, he quit school to turn his attention to commercial pursuits. He was identified with the dry goods trade until 1870, and for several years prior to that, he had interests in the flour and lumber trades.

In 1872, Mr. Kimberly and Havilah Babcock, who were partners in a general store, formed a partnership with C.B. Clark, a junior partner in

a hardware store, and Franklyn C. Shattuck, a traveling salesman. Each man contributed \$7,500 to capitalize Kimberly-Clark & Company and built the Globe Mill in Neenah, Wisconsin. In the first 25 years of its existence, the company expanded from one mill with a two ton-per-day capacity to 14 mills and a daily capacity of 150 tons.

During World War I, the company's absorbent Cellucotton (made with the cellulose from wood pulp fibers, which is more absorbent) was used extensively overseas and in American hospitals by the Red Cross and the U.S. Army as a substitute for cotton. The company found greatly expanded usage for the product after the war.

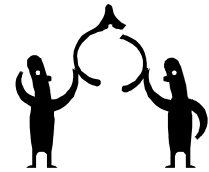
Mr. Kimberly was still president of the company in 1928 when he died in his ninetieth year. He had long outlived his partners. An obituary described him as "a man of national reputation as a businessman; keen

in his commercial perceptions, broad in his grasp of the problems of humanity -- perhaps these were among the prominent traits in the fine and strong character of J. A. Kimberly, who after a long and useful life passed to his reward last Saturday morning."

Another tribute, written in *The American Way*, said of Mr. Kimberly, "He is an example of the free enterprise system at work. In his lifetime the fruits of his labors made him a man of wealth, but he did not lose touch with his fellowmen with whom he lived and worked."

Mr. Kimberly and his wife, Helen Cheney Kimberly, had seven children. The couple's Redlands, California, home "Kimberly Crest" is now open to the public and visited annually by more than 11,000 people. For more information on Kimberly Crest, visit www.kimberlycrest.org.

Wish List



The Paper Discovery Center has a growing “wish list” and gratefully accepts donations of supplies and equipment. In addition to helping reduce necessary purchase costs, donations can also provide you with a productive and adaptive reuse of your unwanted materials. If you have an item to donate, you may request a tax donation letter to assist you in your record keeping. We appreciate your support!

The following items would allow us to better serve you, our guests:

Education

- consumable supplies: glue sticks, paper, pencils, etc.
- origami paper
- aluminum foil
- moveable bookshelf on wheels

Paper Lab

- Sunday comics
- microscopes
- UV lamp
- old books (pre-1860) for use with fiber analysis

Collections

- visible light meter
- archival boxes
- acid free tissue

Operations

- stud finder
- weather radio
- wheelchair
- computer supplies: paper and ink cartridges
- blank laser address labels
- scanner
- 25' video projector cord
- laptop computer

- color printer
- copier
- workshop equipment and tools
- DVD player
- extension cords
- brochure racks
- rack with hooks for backpacks and coats
- walkie-talkies
- microphone/speaker system
- janitorial supplies
- yard tools

And cash, of course!

Paper Discovery Center Donor Pledge Card

Name (List individual & organization) _____ Phone _____

Mailing Address _____ Email _____

I Would Like to Make a Contribution —

Single: \$100 \$250 \$500 \$1000 \$2500 \$5000 Other _____

Multi-Year: I/We pledge a gift of \$_____ over a period of ___ years in support of the Paper Discovery Center and the many families and children it will serve through education and discovery.

Amount Enclosed: \$_____ Balance Due: \$_____ Please make check payable to: Paper Discovery Center

I/We would like to donate a gift of securities* to the Paper Discovery Center. I/We pledge _____ shares of

(name of security)

Thank You For Your Support At This Important Time For Our Organization.

Ask your employer about matching funds programs!

Mail this card along with payment to: Paper Discovery Center, 425 W. Water Street, Appleton, WI 54911.

*Contact our office at 920-380-7491 for transfer instructions or with any questions.

Gifts are tax deductible to the extent provided by law.



Paper Discovery Center

HOME OF THE PAPER INDUSTRY INTERNATIONAL HALL OF FAME

425 West Water Street

Appleton, WI 54911

Phone: 920-380-7491

Fax: 920-731-2704

www.paperdiscoverycenter.org

Celebrating All Things Paper