

Paper Discovery Center

Pulp & Paper Merit Badge

Day is fast approaching on Saturday, November 3rd—and already there is a waiting list developing! If you would like more information on our Badge Program, contact Dave Lee, Educator, at 920-380-7491.

INSIDE THIS ISSUE:

- American Archives Month 2
- Outdoor Learning Center 2
- Family & Friends 2
- Watershed Training 3
- A Closer Look at the Hall of Fame 3
- Wish List 4



All Things Paper

VOLUME 3, ISSUE 10

OCTOBER 2007

A New Look for Our Lobby Entrance

The Paper Discovery Center has a new mission statement, and with it, a new look! The curved wall outside our entrance now features a 42” plasma screen welcoming visitors to the Center and showcasing the wonders that await beyond our doors. An entrance sign, our new mission statement, and the



familiar paper airplane complement the new screen. Also new is a visitor kiosk provided through a grant from the Fox Cities Convention and Visitors Bureau. It provides visitors with information on additional must-see things in the area. Come check out our new look!



WISCONSIN FEDERATION OF
MUSEUMS

Paper Discovery Center to Host the 2007 Wisconsin Federation of Museums' Annual Meeting

The Paper Discovery Center is the host for the 2007 annual meeting of the Wisconsin Federation of Museums being held on Monday, October 29th. With the theme of “Making Museums Matter,” the meeting will explore the many and varied ways in which “museums matter” to their members, visitors, and local communities. Speakers from various disciplines will address museums as educational resources for young audiences, as attractive venues for celebrations and special events, and as tourist attractions that contribute to the local economy.

The keynote speaker for this year’s annual meeting will be George Tzougros, the Executive Director of the Wisconsin Arts Board. Intimately familiar with the role of visual and performing arts organizations throughout the state, Tzougros will discuss the substantial economic impact of museums and other cultural institutions on local communities, geographic regions, and the state of Wisconsin.

continued on page 3

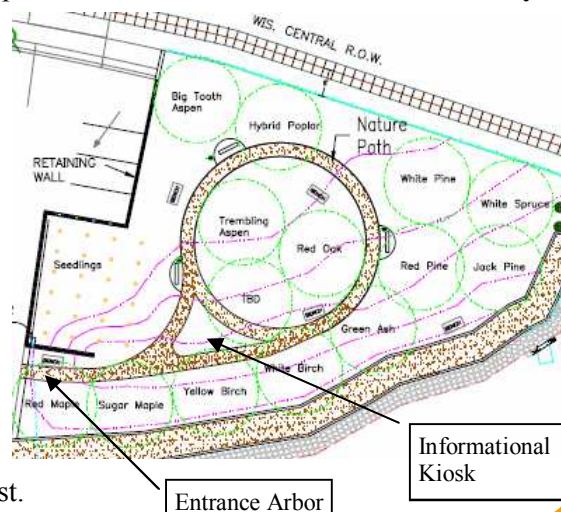
October is American Archives Month

This month, the nation turns to celebration and recognition of the organizations, people, and programs that are responsible for maintaining our communities' vital historical records. The Paper Discovery Center is one of these organizations. Since before our opening in 2005, the Paper Discovery Center has served as a repository for historical records linked to the paper industry. These records, and the place in which they are kept, are called "archives." The Paper Discovery Center's archives includes correspondence, photographs, video recordings, and other primary sources which help tell this story. The archives are held for benefit of the public—as a resource for gathering firsthand facts, data, and evidence. Archivists keep records that have enduring value as reliable memories of the past, and help people find and understand the information they need in those records. America's largest archives is the National Archives in Washington, DC. Like the National Archives and even the box in your basement that holds records of your family's history, the Paper Discovery Center has created a reliable information source of irreplaceable assets. If you have an item you would like the Paper Discovery Center to consider for inclusion in its collection, please contact Carrie Mahlik, Curator/Archivist.

Outdoor Learning Center Developments

The Paper Discovery Center's Outdoor Learning Center will be enhanced in the next several months, thanks to a partnership with the **Northern Wisconsin Regional Council of Carpenters (NWRCC)**. An arbor and sign will welcome visitors to the Paper Discovery Center to begin their journey to an understanding of trees and their connection to papermaking. Near the center of the Outdoor Learning Center will be a three-sided, covered kiosk for use in sharing literature and detailed signage about topics related to trees and papermaking. **Al Atkinson, Director of Education for the NWRCC**, is working with the council's apprentices to construct the units. **Bob Mayer, Director for Business Development for CR Meyer**, is coordinating the preparation of holes on site for installation of the two units when complete.

If you have information to provide for display in the Outdoor Learning Center or have an interest in helping prepare a "tree cookie" display or other hands-on component, please contact Carrie Mahlik, Curator/Archivist.



Welcome Family & Friends

We welcome the following additions to our Family & Friends program:

Friend Bertil & Lena Engh

Family & Friends enjoy many benefits through their support of the Paper Discovery Center. Additionally, they get the added benefit of knowing that they are supporting a valuable educational resource that celebrates paper.



As a member of the Association of Science-Technology Centers, the Paper Discovery Center is now also able to offer free or discounted admission to 275 science centers throughout the nation to all members of its Family & Friends program at the Friend level or higher.

Sign up for your 12-month membership today by filling out the form on our website www.paperdiscoverycenter.org. Look under "Family & Friends."

Family & Friends Program

Apply Today's Admission
Toward An Annual
Membership

Paper Discovery Center
CELEBRATING ALL THINGS PAPER

2007 WFM Annual Meeting continued from page 1

Two morning panel discussions will explore the topics of “Attracting Young Audiences” and “Attracting and Retaining Volunteers.” Bobbi Malone, Director of the Office of School Services for the Wisconsin Historical Society, Jennifer Van Haaften, Curator of Interpretation at Old World Wisconsin, and Beth Lemke, Museum Educator at the Wisconsin Historical Museum, will share their approaches to engaging school tour groups and other young visitors to museums. Dawn Scher Thomae of the Milwaukee Public Museum will then focus on internships and other learning opportunities as important tools in assembling a corps of volunteers.

The afternoon will feature a roundtable discussion facilitated by Alan Westby of EAA and Dawn Day Hourigan of the Pabst Mansion on the topic of “Community Events in Your Museum.” The session will explore the positive and negative aspects of renting out museum facilities for private parties, business meetings, and other types of gatherings.

Contact the Wisconsin Federation of Museums for registration information: www.wisconsinmuseums.org

Please note: The Paper Discovery Center will be closed to the public Monday, October 29th, to accommodate the Wisconsin Federation of Museums’ annual meeting.

What is a Watershed?

This is one of the many topics discussed during recent field trips with sixth grade students from Greenville Middle School. After an afternoon of training with **volunteer Sally Berben**, fellow volunteers were prepared to explain to the students how the paper industry is part of a larger community—one that both benefits from and impacts our ecosystem.

Through a hands-on demonstration, students created a watershed, laid out their city—complete with schools, homes, industry, parking lots, streets, parks, and forests—located



Volunteers (L-R): Marilyn Gardner, Marilyn Sim-Tatera, Erik Madisen, Bertel Engh, Cheryl Humleker, and Sally Berben.

sources of pollution and contamination from each of those locals by sprinkling Kool-Aid in appropriate areas, and watched what happened when they started a rain storm.

Students explored how water drains in a watershed, how water gets polluted, and how forests and human actions are beneficial to protecting our waterways.

A Closer Look at the Paper Industry International Hall of Fame

On October 18th, six leaders from the paper industry were inducted into the Paper Industry International Hall of Fame. In recognition of this event, details on the history of the Hall of Fame and its role are provided.

The idea of a Hall of Fame for the paper industry germinated in May 1992 when a group of current and former paper industry executives in Wisconsin’s Fox River Valley met to discuss how the importance of paper, and particularly some of the giants of the industry, could be recognized. They especially felt that the industry deserved recognition as the cornerstone of the Valley’s economy, and that of the world as well.

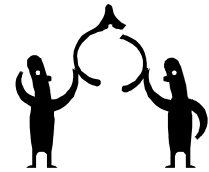
Annual ceremonies for inducting individuals to the Paper Industry International Hall of Fame began in 1995 with a slate of six honorees. The induction ceremonies this month brought the total of inductees to 82—representing 10 nations and 73 companies/organizations. Today the stories of these leaders are shared with visitors from throughout the world at the Paper Discovery Center, home to the Paper Industry International Hall of Fame.

Any individual, living or deceased, who has pioneered and/or uniquely helped the world’s paper industry flourish, is eligible for induction into the Paper Industry International Hall of

Fame. Recognition will be based on contributions in the following categories: Academics; Economics; Entrepreneur; Founder; Leadership; Marketing/Sales; Research and Development; Service; and Technology.

Nominations for induction into the Paper Industry International Hall of Fame are to be submitted to the Honors Committee of the Board of Directors on an official nomination form. Nominations may not be submitted by any current members of the Paper Industry International Hall of Fame Board of Directors or Honors Committee. Forms are available at www.paperhall.org.

Wish List



The Paper Discovery Center has a growing “wish list” and gratefully accepts donations of supplies and equipment. In addition to helping reduce necessary purchase costs, donations can also provide you with a productive and adaptive reuse of your unwanted materials. If you have an item to donate, you may request a tax donation letter to assist you in your record keeping. We appreciate your support!

The following items would allow us to better serve you, our guests:

Education

- thumbtacks
- consumable supplies: paper, pencils, etc.
- origami paper
- aluminum foil
- moveable bookshelf on wheels

Paper Lab

- Sunday comics
- microscopes
- UV lamp
- old books (pre-1860) for use with fiber analysis

Collections

- visible light meter
- archival boxes
- acid free tissue

Operations

- batteries - AA, AAA, D
- stud finder
- weather radio
- wheelchair
- ink cartridges
- blank laser address labels
- scanner
- 25' video projector cord
- laptop computer

- copier
- workshop equipment and tools
- DVD player
- extension cords
- brochure racks
- rack with hooks for backpacks and coats
- walkie-talkies
- microphone/speaker system
- janitorial supplies
- yard tools

And cash, of course!

Paper Discovery Center Donor Pledge Card

Name (List individual & organization) _____ Phone _____

Mailing Address _____ Email _____

I Would Like to Make a Contribution —

Single: \$100 \$250 \$500 \$1000 \$2500 \$5000 Other _____

Multi-Year: I/We pledge a gift of \$_____ over a period of ___ years in support of the Paper Discovery Center and the many families and children it will serve through education and discovery.

Amount Enclosed: \$_____ Balance Due: \$_____ Please make check payable to: Paper Discovery Center

I/We would like to donate a gift of securities* to the Paper Discovery Center. I/We pledge _____ shares of

(name of security)

Thank You For Your Support At This Important Time For Our Organization.

Ask your employer about matching funds programs!

Mail this card along with payment to: Paper Discovery Center, 425 W. Water Street, Appleton, WI 54911.

*Contact our office at 920-380-7491 for transfer instructions or with any questions.

Gifts are tax deductible to the extent provided by law.



Paper Discovery Center

HOME OF THE PAPER INDUSTRY INTERNATIONAL HALL OF FAME

425 West Water Street

Appleton, WI 54911

Phone: 920-380-7491

Fax: 920-731-2704

www.paperdiscoverycenter.org

Celebrating All Things Paper