

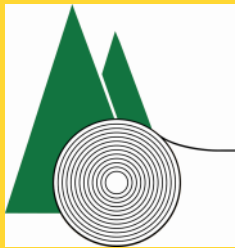
Paper Discovery Center



UPCOMING EVENTS

Summer Science Series
Flying Objects—8/18-21
Color—8/25-28
Sponsored by SCA

Paper Industry
International Hall of
Fame Induction
Ceremony
Thurs Sept 23



Paper Around The
World
Sept 18—Oct 16

Home School Science
Sessions
Oct 8—Chemistry
Concepts
Oct 15—Color
Nov 12—Forces
Nov 19—Paper Testing
(more in Jan-Mar,
registration required)

Webelo Scout Science
Pin Workshop
Nov 10 (registration
required)

All Things Paper

VOLUME 7, ISSUE 4

JULY - AUGUST, 2010

Energy Independence Event

“Let’s Zero in on Energy Independence”
Event, organized by SCA was held on July 21.
The event took place on the grounds of SCA’s
Neenah facility and included a dedication of the
wind turbines installed at this site.



Companies, educational institutions, and community groups set up information booths on topics including: solar energy, bio-fuels, electric cars, wind power, sustainability, and more.

The Paper Discovery Center was happy to host a station of activities from our Summer Science Series, which was sponsored by SCA. The children and families had fun creating wind-driven items out of paper — from pinwheels to stomp rockets.

The PDC also distributed a pamphlets titled, “What you Need to Know About Energy”, published by The National Academies—Advisors to the Nation on Science, Engineering, and Medicine. Go to www.nap.edu to see a full text on-line version.



Explore how paper is used and made in other countries. Learn about the Paper Industry International Hall of Fame inductees from these countries, including 2 new ones from Germany this year.

The event includes many extra hands-on activities, such as: country-specific paper crafts, games that use paper from each of the countries, scavenger hunts with Hall of Fame clues, and map puzzles. Learn about GPS (Global Positioning System) and find hidden geo-caches around the PDC grounds.

**Countries
Highlighted
This year**

**Mexico
Australia
South Korea
Germany**



SUMMER SCIENCE SERIES

Liquid Nitrogen Ice
Cream —A tasty
favorite during
Thermal Energy,
July 21-24



Mullen Burst—One
of the many activi-
ties during Paper
Testing, July 28-31

**ONLY TWO MORE
SESSIONS LEFT**

**Flying Objects—8/18-21
Color—8/25-28**



For six different weeks during the summer, visitors to the Paper Discovery Center are able to participate in lots of extra hands-on science activities, included in the regular admission price. Each week a different topic is presented. No registration is required. The activities and demonstrations are available to walk-in visitors throughout our open hours, 10 am to 4 pm. In addition to tons of fun, the lessons unveil the connection of the science topic to paper— showing the broad application of science in paper-making and the many uses of paper in science experiments.



Paper Industry
International
Hall of Fame, Inc.

**Call: 920-380-7491 or e-mail
Dave@paperdiscoverycenter.org**
\$90 per person, reservations due Sept. 10

16th Annual Induction Ceremony

Thursday Evening, Sept 23, 2010

Reception at 5:00, dinner at 6:30, induction ceremony at 8:00,
dessert reception at 9:00.

Radisson Paper Valley Hotel, Appleton, WI

It is very motivational to listen to stories of individuals who have done great things and had a strong passion for their work. The Hall of Fame Induction Ceremony is an event where this motivational energy fills the room. A video-biography of each inductee highlights their accomplishments and gives you a glimpse into their personal lives. Upon receipt of the award, the inductee or relative / designee shares more enlightening stories.

The class of 2010 includes:

- **Henry Frambach** (1840-1921, USA) Built and ran six paper and/or pulp mills in Wisconsin and Michigan.
- **Johann Gutenberg** (1398-1496, Germany) Originated a method of printing from moveable type.
- **Friedrich Gottlob Keller** (1816-1895, Germany) Invented a wood grinding machine that could extract fibers from trees.
- **Jasper Mardon** (1921-1997, Canada) published over 110 technical papers which included path-breaking studies in pressing, drying, and calendaring.
- **John Swanson** (1917-2004, USA) taught at the Inst.of Paper Chemistry for over 40 yrs and contributed to the knowledge of surface and colloid chemistry in the converting process.

The event's key note speaker is a leader in the industry. This year's speaker is Robert Abernathy, Group President of North Atlantic Consumer Products of Kimberly-Clark Corp. since March 2008.

“Paying it forward” in School Science Fairs

Some of our student visitors apply and share what they’ve learned as a school science fair project. Often we hear reports of winning awards. Way to go!



Arista visited the Paper Discovery Center last summer and returned to school in New Mexico, where she won an award in the science fair with her papermaking entry.

Arista is pictured here during a return visit to the PDC with her hand-made paper having an embedded comic and a creative design she ‘ironed’ onto thermal paper during the Thermal Energy Science Series.

Home School Sessions

As we approach Fall, students and parents everywhere are gearing up. The Paper Discovery Center offers great home school science programs using active learning techniques. Best for ages 10-14; however all ages can benefit from and enjoy the activities. The 2 hour sessions (9-11 am or 1-3 pm) cover a variety of topics. Pre-registration is required. The cost is \$4 per student, parents and children 3 yrs and under are free. The fall sessions include:

Oct 8—Chemistry Concepts
Oct 15—Color
Nov 12—Forces
Nov 19—Paper Testing

To register or request more info, call 920-830-7491, or e-mail Barb@paperdiscoverycenter.org

1916 Chandler & Price Platen Printing Press

Visitors to the Paper Discovery Center can now see a 1916 printing press run. This is a recent addition to our exhibits, thanks to the generosity of Todd Van Harpen of Pioneer Press. The donation includes a work desk and lead and wood type. This will be part of an upcoming printing exhibit at the Paper Discovery Center that will include information about the development of printing and an interactive activity table for young people. We also have received a smaller 1902 Chandler & Price press donation from John Seifert – this donation included 63 drawers of type and related materials. This exhibit is very timely, since Johann Gutenberg, inventor of movable type printing, is a 2010 inductee into the Paper Industry International Hall of Fame.



Support the Mission: “Celebrate All Things Paper—The Wonder and the Legacy”

Please help us achieve long-term sustainability by making a gift of financial support. We think that it is very important for us to buy our building and move our endowment to the multimillion dollar level – every gift can help. Our current metrics are impressive: 40,000 visitors, 4,000 field trip students each year, more than 300 boy scout merit badges in pulp & paper and our annual growth is substantial. Visitors treasure what they learn about the Wonder and the Legacy of paper and its importance to society as a whole and to Wisconsin. Our location in the historic former Atlas paper mill on the banks of the Fox River in Appleton is breathtakingly awesome in every way. Thanks for your support!



Where do your donations go?

The biggest piece of the pie is

Education = 67%.
 Hall of fame = 19%
 Fundraising = 10%
 Admin = 4%



Paper Discovery Center

HOME OF THE PAPER INDUSTRY INTERNATIONAL HALL OF FAME

425 West Water Street
Appleton, WI 54911

Paper Discovery Center Donor Pledge Card

Name (List individual & organization) _____ Phone _____

Mailing Address _____ Email _____

I Would Like to Make a Contribution —

Single: \$100 \$250 \$500 \$1000 \$2500 \$5000 Other _____

Multi-Year: I/We pledge a gift of \$_____ over a period of ___ years in support of the Paper Discovery Center and the many families and children it will serve through education and discovery.

Amount Enclosed: \$_____ Balance Due: \$_____ Please make check payable to: Paper Discovery Center

I/We would like to donate a gift of securities* to the Paper Discovery Center. I/We pledge _____ shares of

(name of security)

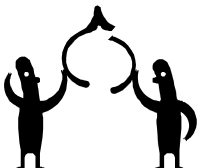
Thank You For Your Support At This Important Time For Our Organization.

Ask your employer about matching funds programs!

Mail this card along with payment to: Paper Discovery Center, 425 W. Water Street, Appleton, WI 54911.

*Contact our office at 920-380-7491 for transfer instructions or with any questions.

Gifts are tax deductible to the extent provided by law.



Many non-profit organizations are challenged by the downturn in our economy. If you can find it within your means, please consider a donation. Now it is more important than ever. Help us continue the great work we are doing!

Phone: 920-380-7491
Fax: 920-731-2704
www.paperdiscoverycenter.org

**Celebrating All Things Paper -
the Wonder and the Legacy**